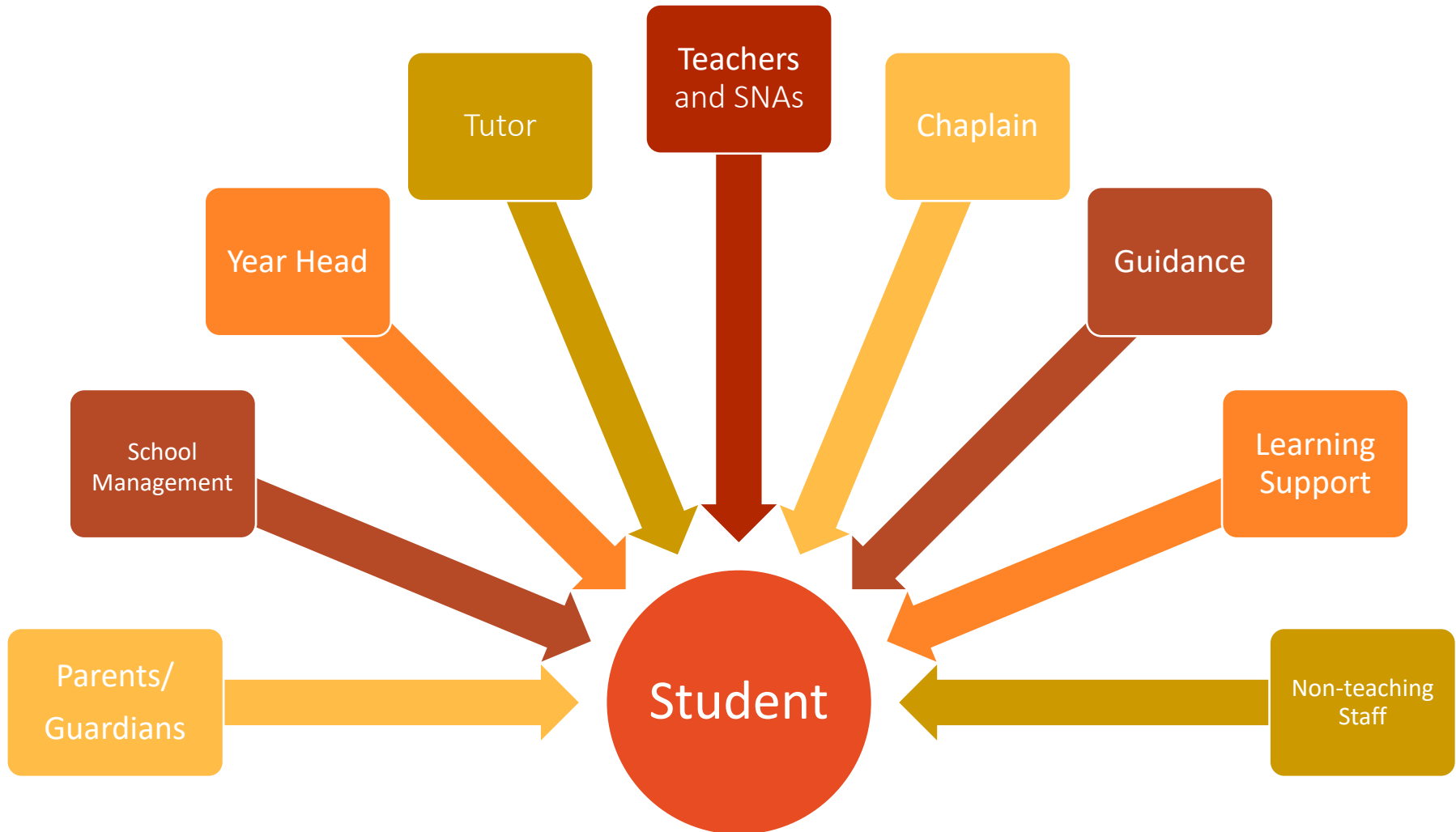




Parents of
Incoming 1st Year 2022

The Team and the Goals



Year Head – Patty Wade

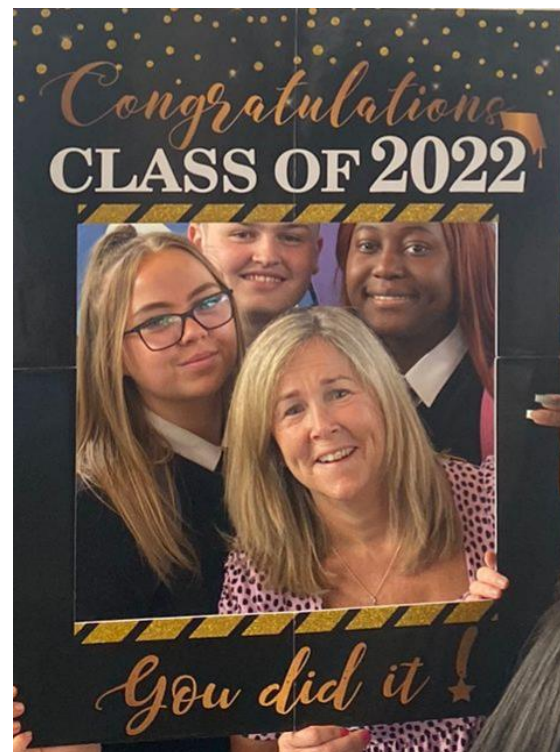
For students:

- Get to know them.
- Guide them through the transition.
- Motivate, lead and monitor.
- Listen and talk.

For you:

- Year Head is your main point of contact.
- Administrative role – reports, options etc.
- Main link with teachers, students, dealing
- with any issues.

- Pwade@psn.ie



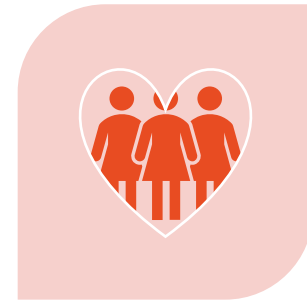
Our Core Values



MEAS



DÍOGRAIS



DEA-CHROÍ

Support PSN's values - a three-way partnership

- Familiarise yourself with policies ([website](#)), procedures (journal) & events (Twitter @PSNeasain)
- Stay actively involved -
 - Check uniform
 - Check homework
 - Check for correct books and materials
 - Make sure to be on time
 - Check/sign journal for notes etc.
- Communicate with the school

Welcoming your child to PSN

A

Acceptance

B

Belonging

C

Curriculum

- Two Induction Days – make connections, become familiar with school
- Focus on wellbeing - check & connect with all incoming 1st year students and mentor system
- Supports with IT skills, focusing on teaching your child how to use Office 365, Zoom etc

Adjustments from Primary School

- Multiple teachers, classrooms, subjects
- New classmates
- Longer school day
- Classroom movement
- Managing books, lockers, changing for PE, and themselves!



The School Day

Time		
8.40 am	Assembly	
8.50 am	Morning Classes begin	Different locations
10.50-11.00	Break	
13.00	Lunch	
13.30	Back in school building	
13.30-15.30	Afternoon Classes begin	



The School Week

	MON	TUES	WED	THUR	FRID
08.50					
09.50					
10.50-11	BREAK	BREAK	BREAK	BREAK	BREAK
11.00					
12:00					
13.00	LUNCH	LUNCH	School ends 13:20 Wed.	LUNCH	LUNCH
13.30					
14:30					
15.30	School ends	School ends		School ends	School ends

Arrangement of Classes

- Six Classes FOINSE
- Students will follow common course in first year.
- All have access to higher/ordinary level in Irish, English and Maths.
All other subjects are set at a common level.
- Class placement will be sent out via text



A Broad Curriculum...

Exam Subjects

- Gaeilge
- English
- Maths
- Science
- History
- Geography
- Business Studies
- Religion

Area of Wellbeing:

- C.S.P.E. (Civic, social, political education)
- S.P.H.E. (Social, personal, health education)
- P.E. (Physical Education)
- LLL (Living, Learning, Leading)

Plus 2 other Options (next slide)



Subject Options

Spanish*

French*

Wood Technology*

Visual Art*

Technology*

Technical Graphics*

Home Economics*

Music*

Engineering*

- Subjects will be divided into two blocks.
- All subjects will be sampled in September
- Before mid-term 1 subject from each block to be chosen.
- Aim is to provide best range for each student
- Restrictions on numbers in each class
- Language may be needed for college



Wellbeing



Developing Key Skills for Life



Junior Cycle 2022-2023

- Classroom-based assessments (CBAs in 2nd and 3rd year)
- State Exams – 90% + 10% Assessment Task = 100% result
- All exams are under 2 hours duration
- JCPA will report the:
 - Results of the Junior Cycle exams
 - Results of the Classroom-Based Assessments in Subjects
 - Results of the Classroom-Based Assessments in PE, SPHE, & CSPE
 - On other areas of learning
- Reported using new terms



New Language of Reporting

State Examinations

- Distinction
- Higher Merit
- Merit
- Achieved
- Partially Achieved
- Not Graded

Classroom-Based Assessments

- Exceptional
- Above expectations
- In line with expectations
- Yet to meet expectations
- Not reported

Uniform



- School jumper
- School tie
- White shirt
- Grey school trousers/Grey box-pleated skirt
- Wine knee socks/tights
- Grey/black socks

Available from [Lynch's of Marino](#)

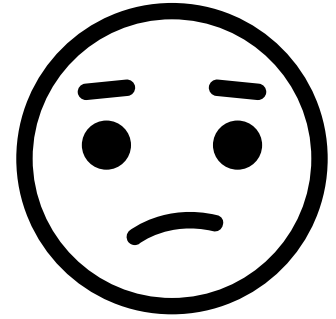
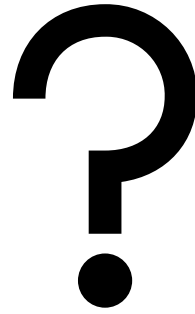


Uniform

PSN Jacket



No other jackets or outerwear are permitted



Shoes (not runners!)

Use of Mobile Phones & Headphones!

- At the 'Stop and Think' line phones are put on silent mode and put away
- Phone use is prohibited in the school and in classes unless explicit permission is given by the teacher
- Responsible use of mobile phones at lunch time is permitted

Issues around mobile phones...

- By-passing school protocols
- Refusal to hand them over
- Taking pictures of others and posting without permission
- Getting involved in online bullying/harassment
- Accessing/distributing inappropriate material



VSWare

VShare is the school's data management system. All your child's details are stored there.

You can access your child's

- timetable
- attendance
- behaviour record
- reports



VShare: Username/Password will be texted to you before last week of August.

Access is through link on school website or through the app.

Absences

A student must have a note explaining their absence on their return to school. This will be recorded on VSWare.

Link to downloading app. - <https://support.vsware.ie/en/parent-app-downloading-and-logging-in>

Link to submitting absences -

<https://support.vsware.ie/en/a-parent-sending-an-absence-request>

An automated text is sent if your child is absent first class*.

Communication: the Journal

- Vital means of communication between us.
- What to do if ...
- Homework recorded
- Notes to and from
- Late arrival to school recorded
- DAILY CHECKED and WEEKLY SIGNED by you!



People who
changed the
world

Vincent Barry (1908-1975): Born in Cork, Ireland, he accidentally discovered a cure for leprosy while trying to solve Ireland's tuberculosis problem. Compound B663 would go on to cure 15 million people of this devastating disease.

Thursday 21

Jeudi Donnerstag Jueves Giovedì Déardaoin

Subject

Homework

Due

2

Friday 22

Vendredi Freitag Viernes Venerdì Dè hAoine

Comments

Parent/Guardian Signature: _____

Teacher Signature: _____

Notes

No.1		Note to/from Parent/Guardian No.1	
Note to/from Parent/Guardian	Received by _____	Student Name _____	Class _____
	Date _____	Date _____/_____/_____	
	Note _____	Note _____	
		Signature of Teacher/Year Head _____	
		Signature of Parent/Guardian _____	

No.2		Note to/from Parent/Guardian No.2	
Note to/from Parent/Guardian	Received by _____	Student Name _____	Class _____
	Date _____	Date _____/_____/_____	
	Note _____		

Where are we now?

- Year head, Ms Wade, and Learning Support teachers are contacting feeder schools
- Students are being allocated to base classes
- Text will be sent home:
 - designated class – mixed ability
 - details of booklists
 - return to school details
- Journals and personal insurance €20
- **Name on items of uniform**



A new start ...

- Planned Induction Day for 1st Years (Thursday 25th of Aug 10:00-12:00)
 - no schoolbooks that day
 - a copy and pen and €20 for journal and insurance
 - in uniform
- Calendar to be published in June
- Contact will be made via text week of 22nd of August
- Watch the Website & Twitter



Tips for the transition

- Adjustment to length of day etc.
- Homework – very little initially
- Meeting new people
- Organisational skills
- Bullying
- Literacy.... Book in your Bag!
- Breakfast Club
- Lunchtime Centra App
- Food



Bus to PSN



- A private bus serves students attending PSN
- Cost is €20 per week – NOT PER JOURNEY. Money is paid to the driver, in an envelope, every Monday morning.
- Punctuality is vital – the bus cannot wait for late students.
- All school rules apply on the bus, and students who do not behave well will not be allowed use the bus.
- Link - [PDF-Nolans-School-Bus-information 2022.doc](#)

Question and Answer Session

Any questions relating **specifically to your child** will not be addressed in this session. We will redirect your question to the relevant party and they will get back to you as soon as possible.

This webinar will be sent out as will the presentation.



Communications

- Check P.S.N website www.psn.ie
- Texts will be sent to you – if mobile numbers or emails change it is important that you let us know
- Twitter (@PSNeasain)
- Email Year Head: pwade@psn.ie
- Learning Support Coordinator: sohanrahan@psn.ie
- Office for general enquiries: office@psn.ie



Thank you all for joining us
this evening.
Have a lovely summer.